

Product Update Notice

Upgraded IG6 LED Sealed Ingrade

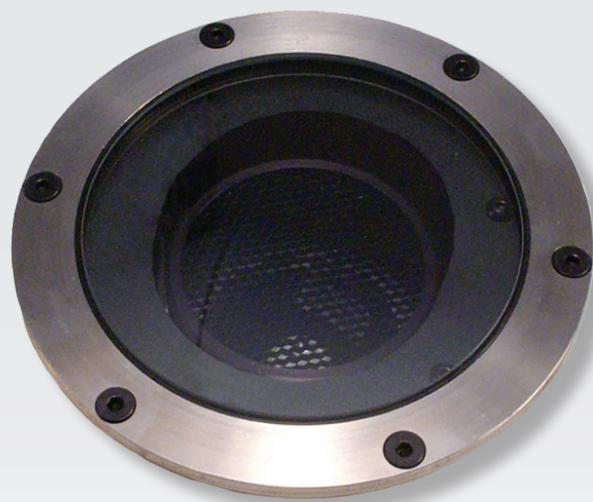
New drivers.

New reflectors.

More lumen output.

More pattern options.

Same bullet proof quality.



Precision cast and machined LED lighting fixture with 120-277V input COB LED (with included driver module). Modular industry standard LED and driver components allow for simple field replacement and future upgrade. Rugged cast bronze construction is suitable for the most corrosive of environments and is designed for in ground mounted up lighting in wet location landscape applications.

Features ¹

- COB LED and driver modules use industry standard components to simplify maintenance and future upgrades.
- Field replaceable internal components and quick disconnects on all wiring connections for easy installation and maintenance.
- One tool aiming provides hot-aiming convenience.
- Optional pour collar is suitable for concrete pour applications.
- Drive-over rated.
- Faceplates available in three metal choices and eight styles with tamper-proof, captive screws.
- Replaceable tempered 1/4" thick glass lens and silicone lens gasket.

Specifications ¹

- Input voltage: 120-277VAC.
- Lumen Output (nominal): 1800lm or 2400lm. ²
- Field replaceable optics: 15°, 24°, 36°, 55°, 65°.
- Color temperature: 2700K, 3000K, 3500K, 4000K.
- CRI options: 80, 90.
- Dimming: Phase dimming (TRIAC, ELV).
- L70 > 55,00 hours.
- IP68 rated.

1. Features and Specifications subject to change without notice. Please see latest specification sheet(s) on website for latest information.
2. Lumen Output (nominal) is ideal lumen output of light engine only in lab conditions. Actual fixture output will vary with fixture/cap type, material, lens/optics options, mounting, orientation, and environmental conditions. For more accurate information, see fixture photometry files on website.